

Lennard:



110 Sheppard Avenue E

57,955 SF of Class "A" Office Space for Lease

110 Sheppard Avenue E

On behalf of SSQ Insurance, Lennard Commercial Realty is pleased to offer 57,955 SF of Class "A" office space at 110 Sheppard Avenue E.



Suites Available

Suite 101:	3,124 SF	Vacant	Base Bldg
Suite 110:	5,466 SF	Vacant	Base Bldg
Suite 200:	5,489 SF	Leased	Built
Suite 307:	1,488 SF	Leased	Built
Suite 311:	1,959 SF	Leased	Built
Suite 610:	3,659 SF	Leased	Built
Suite 640:	1,725 SF	Vacant	Built
Suite 710:	2,168 SF	Vacant	Built
8 th Floor:	7,682 SF	Vacant	Base Bldg
9 th Floor:	17,630 SF	Vacant	Base Bldg
10 th Floor:	12,712 SF	Vacant	Base Bldg

Total Contiguous: 38,024 SF

Total Available: 50,507 SF



Net Rent

Contact Listing Agent

Additional Rent

\$19.95 PSF (2021)

Improvement Allowance

Negotiable based on
Term & Covenant

See Floor
Plans for
Virtual Tours

Property Highlights

- 5 minute walk to Yonge & Sheppard subway station
- 5 minute walk to Yonge Sheppard Centre providing easy access to scores of restaurant and shopping options
- Short drive to Bayview Village Shopping Centre
- Underground parking on site
- Easy access to many highways
- Nestled among corporate neighbours and parks
- Close to the Novotel Hotel

About SSQ Insurance

Founded in 1944, SSQ Insurance is a mutualist company that puts community at the heart of insurance. With assets under management of \$12 billion, SSQ Insurance is one of the largest companies in the industry. Working for a community of over three million customers, SSQ Insurance employs 2,000 people. Leader in group insurance, the company also sets itself apart through its expertise in individual life and health insurance, general insurance and the investment sector. For more information, go to ssq.ca.

Lennard:

Leasing Agent

Reid Stephens*

Vice President

905.247.9220

rstephens@lennard.com

Leasing Agent

Paul Cheevers**

Vice President

416.649.5949

pcheevers@lennard.com

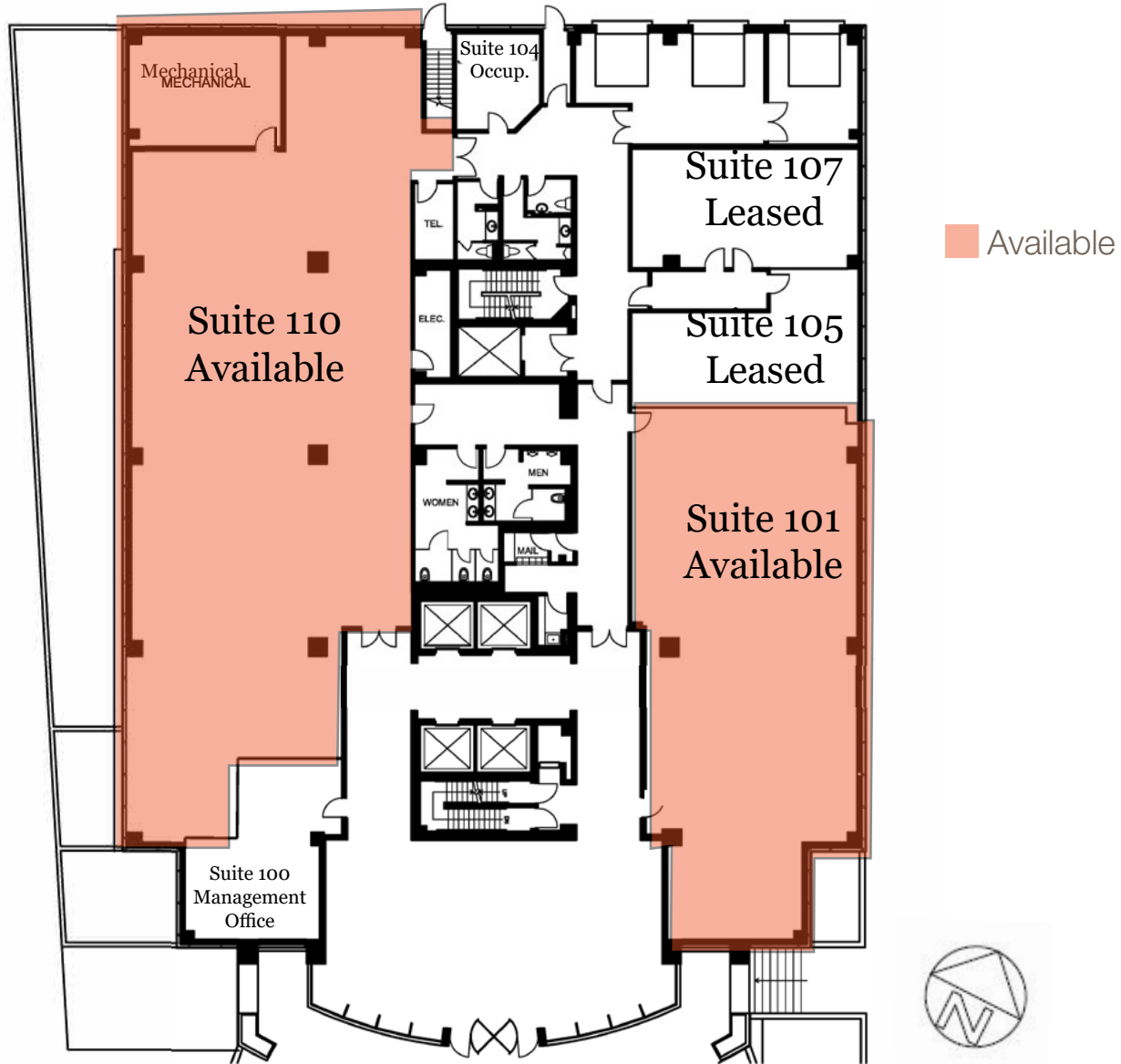
lennard.com

*Sales Representative, **Broker

110 Sheppard Avenue E

Suite 101: 3,124 SF

Suite 110: 5,466 SF



Lennard:

Leasing Agent
Reid Stephens*
Vice President
905.247.9220
rstephens@lennard.com

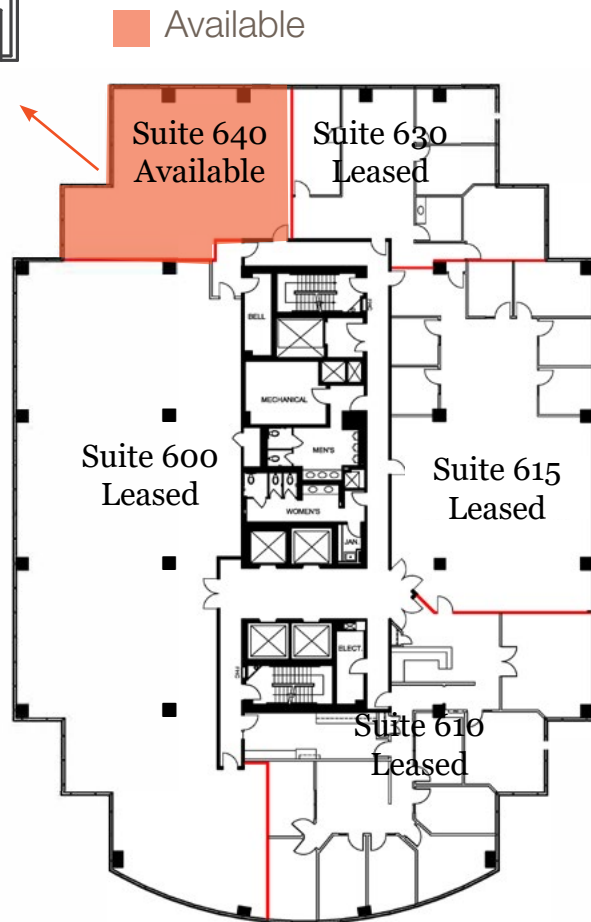
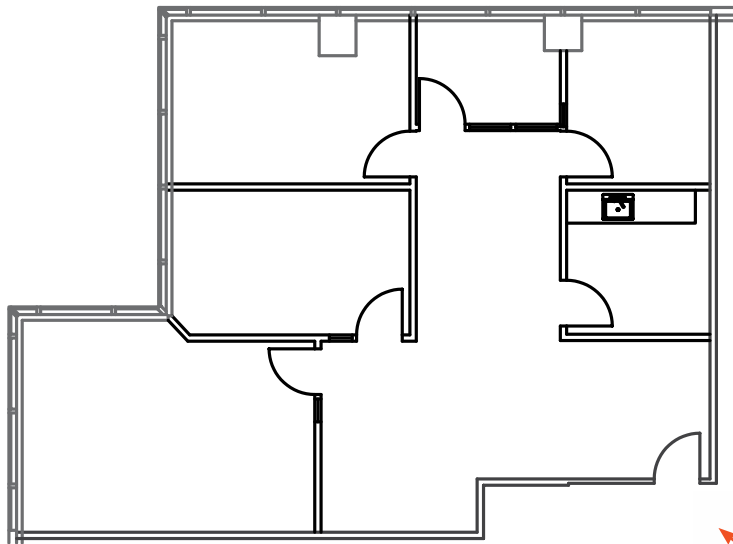
Leasing Agent
Paul Cheevers**
Vice President
416.649.5949
pcheevers@lennard.com

lennard.com

*Sales Representative, **Broker

110 Sheppard Avenue E

Suite 640: 1,725 SF



Lennard:

Leasing Agent
Reid Stephens*
Vice President
905.247.9220
rstephens@lennard.com

Leasing Agent
Paul Cheevers**
Vice President
416.649.5949
pcheevers@lennard.com

lennard.com

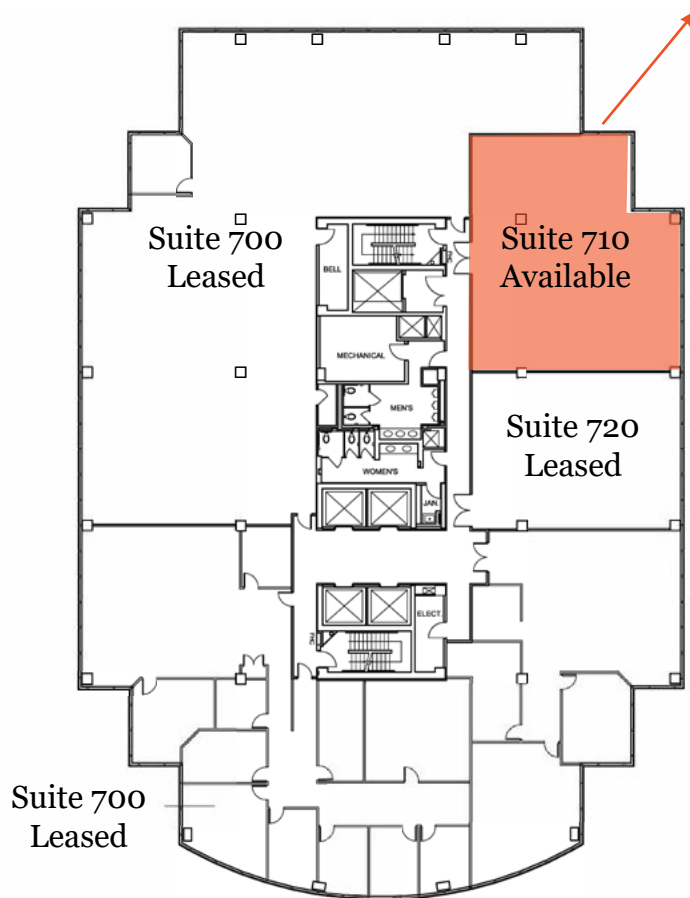
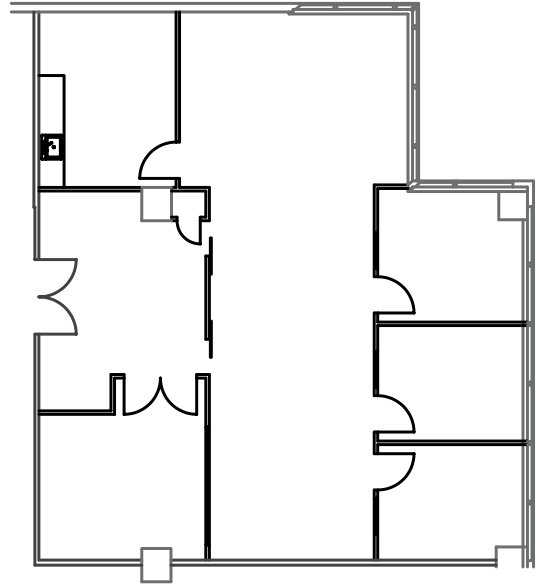
*Sales Representative, **Broker

110 Sheppard Avenue E

Suite 710: 2,168 SF



Click Here
For
Virtual Tour



Available

Lennard:

Leasing Agent
Reid Stephens*
Vice President
905.247.9220
rstephens@lennard.com

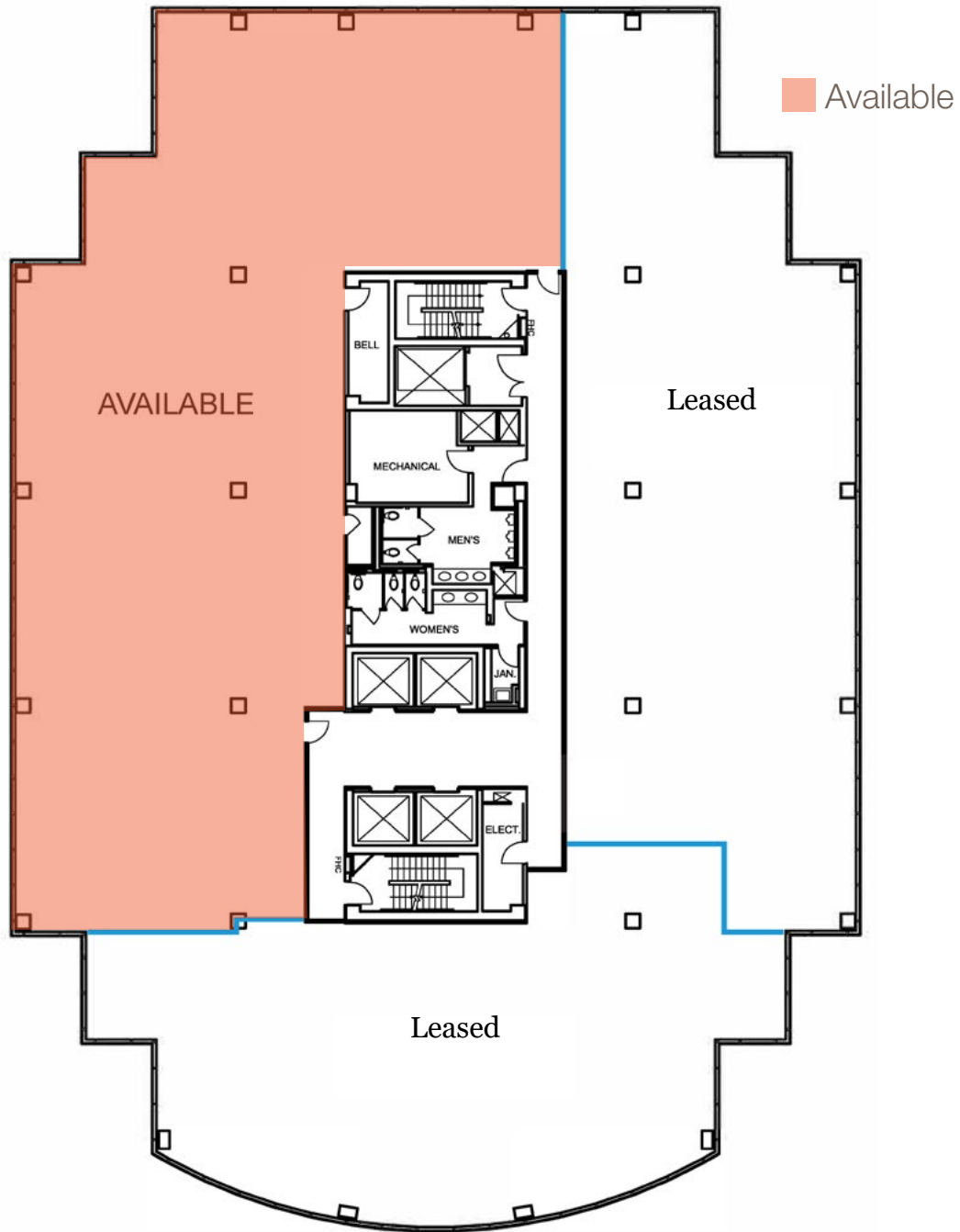
Leasing Agent
Paul Cheevers**
Vice President
416.649.5949
pcheevers@lennard.com

lennard.com

*Sales Representative, **Broker

110 Sheppard Avenue E

8th Floor: 7,682 SF (approx.)



Lennard:

Leasing Agent
Reid Stephens*
Vice President
905.247.9220
rstephens@lennard.com

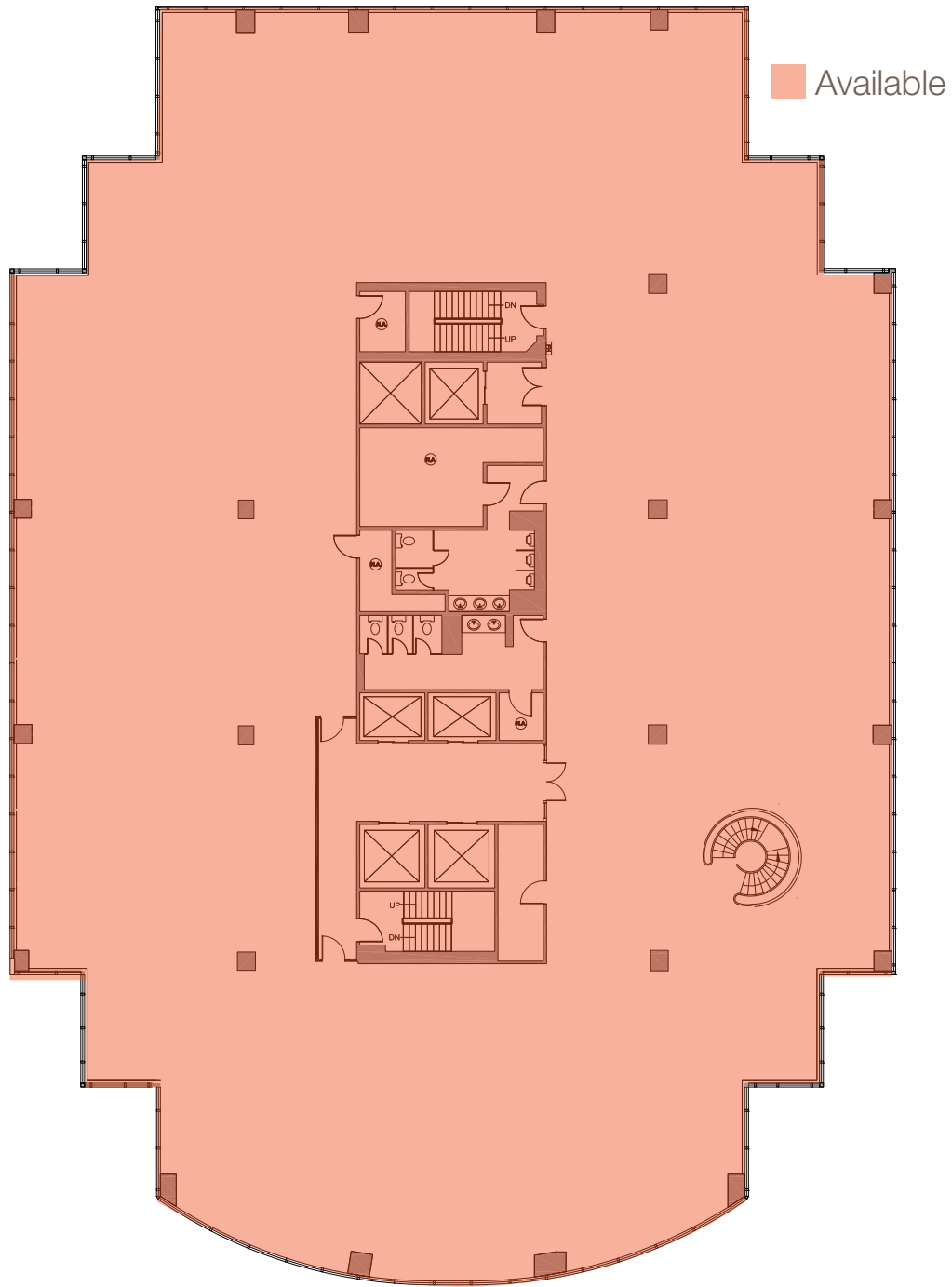
Leasing Agent
Paul Cheevers**
Vice President
416.649.5949
pcheevers@lennard.com

*Sales Representative, **Broker

lennard.com

110 Sheppard Avenue E

9th Floor: 17,630 SF



Lennard:

Leasing Agent
Reid Stephens*
Vice President
905.247.9220
rstephens@lennard.com

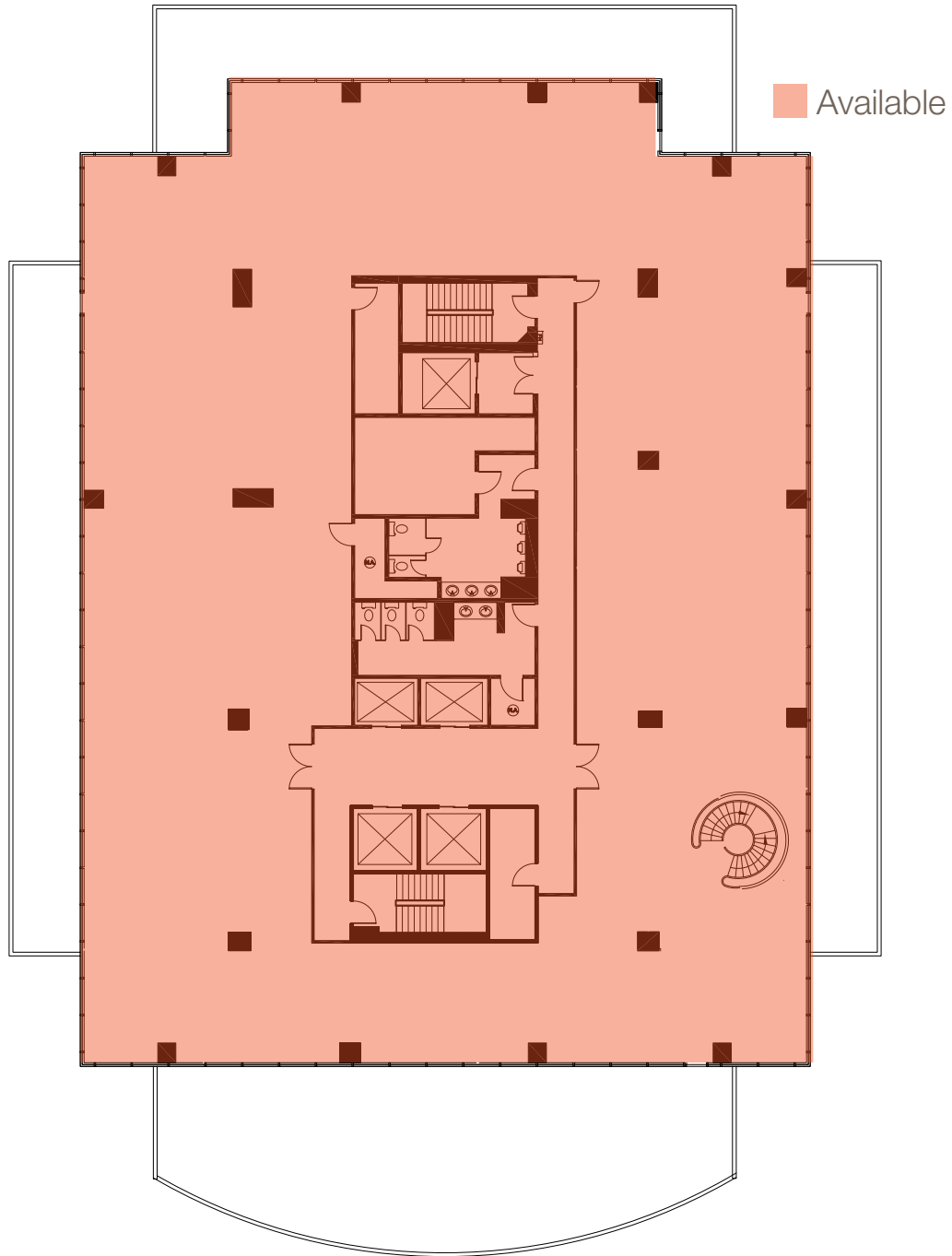
Leasing Agent
Paul Cheevers**
Vice President
416.649.5949
pcheevers@lennard.com

lennard.com

*Sales Representative, **Broker

110 Sheppard Avenue E

10th Floor: 12,712 SF



Lennard:

Leasing Agent
Reid Stephens*
Vice President
905.247.9220
rstephens@lennard.com

Leasing Agent
Paul Cheevers**
Vice President
416.649.5949
pcheevers@lennard.com

*Sales Representative, **Broker

lennard.com